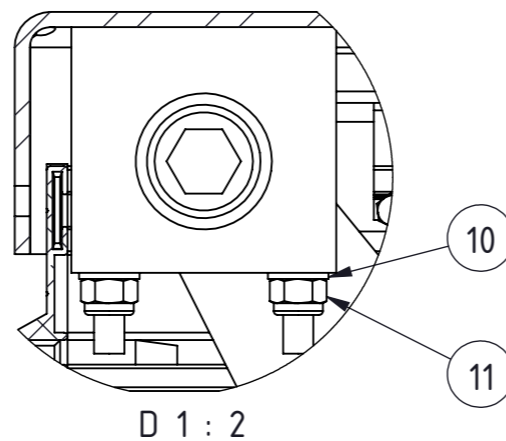
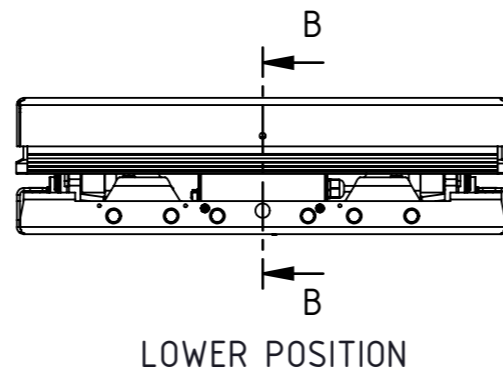
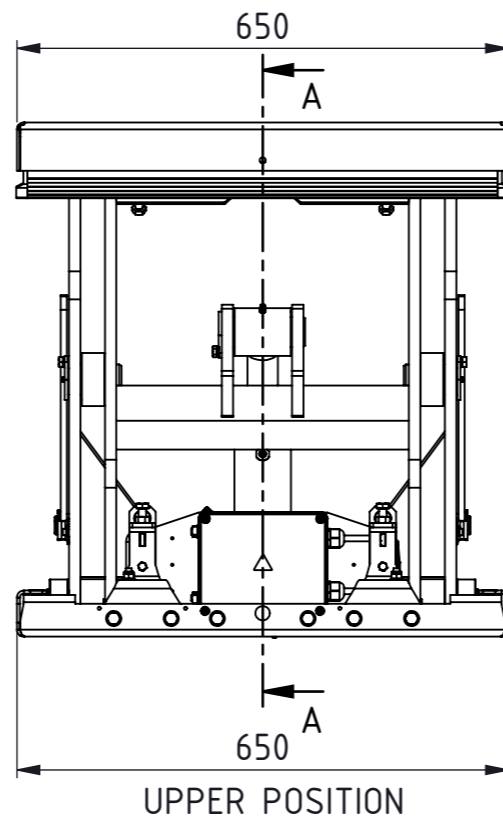
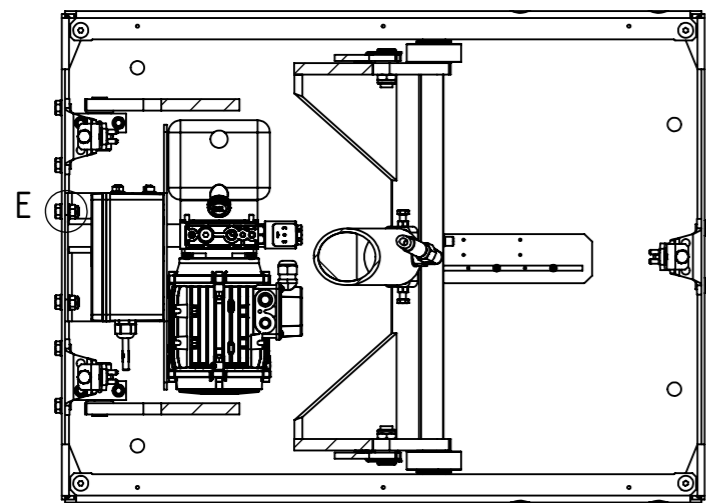
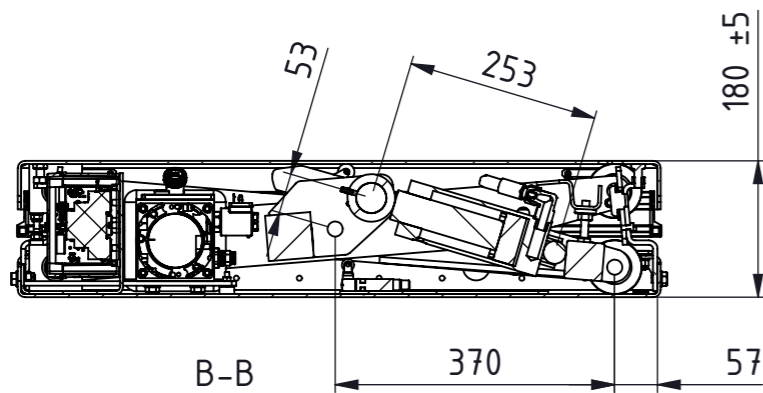
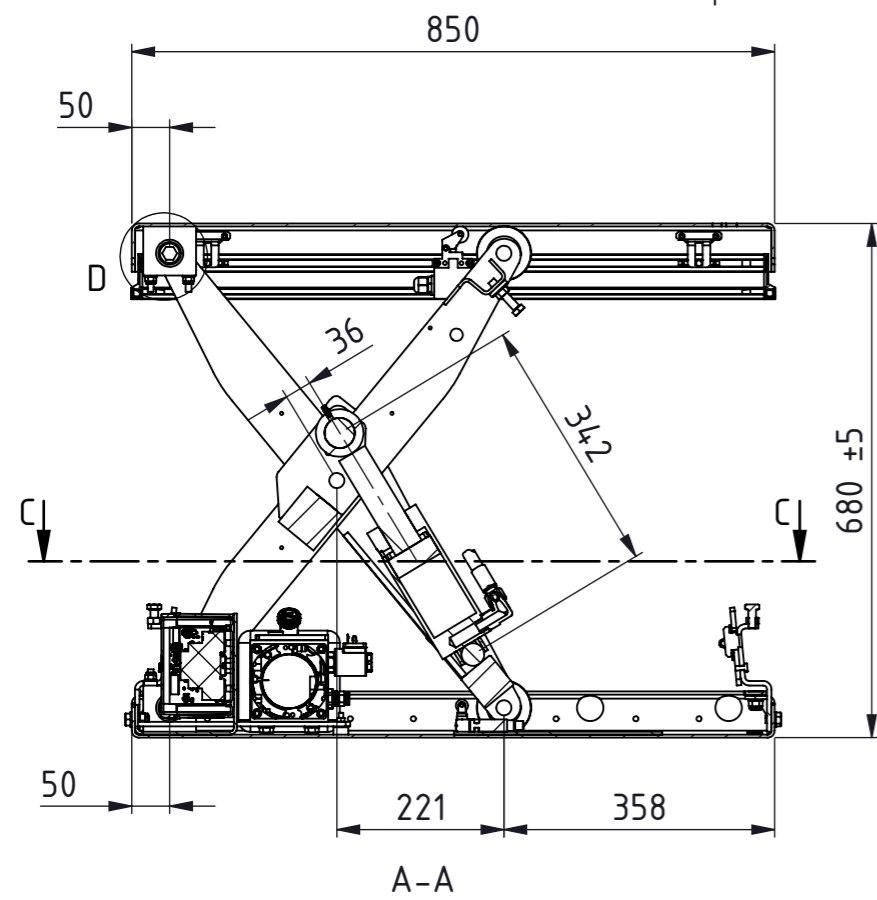
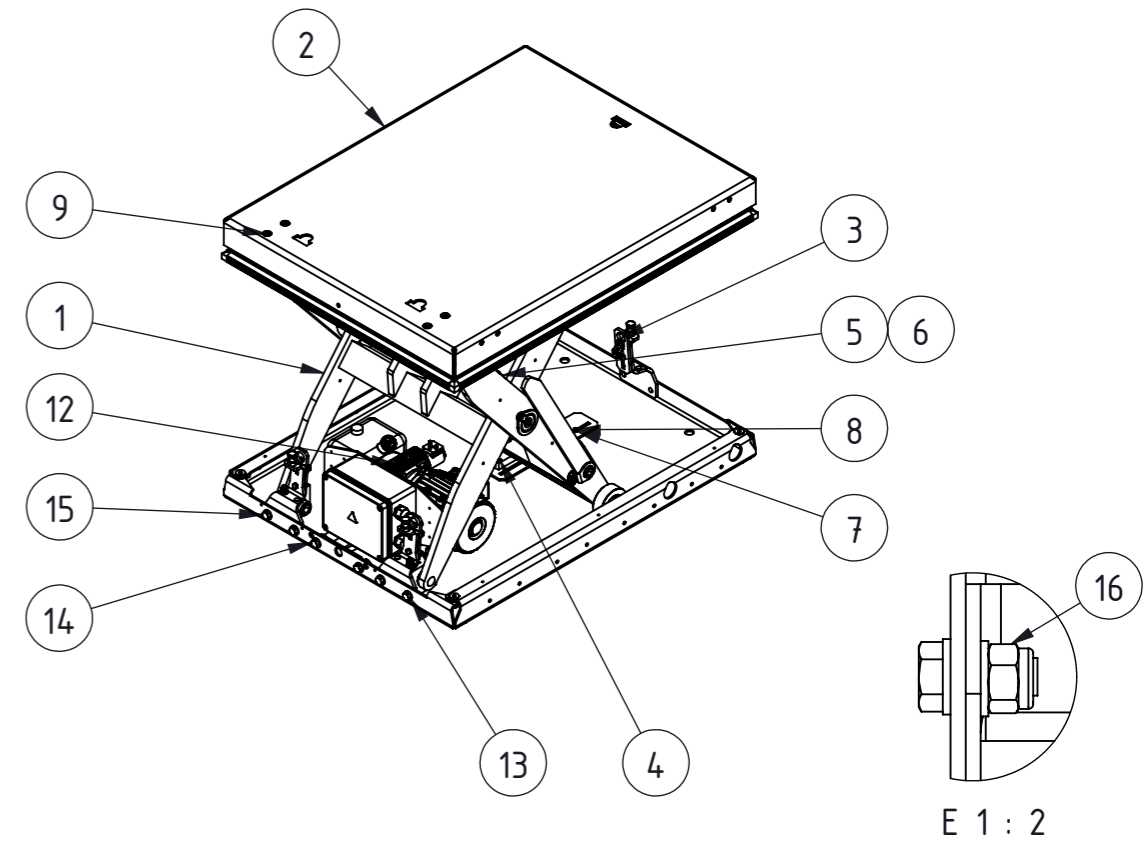


This document is our property and must not be copied, used for manufacturing or communicated to any other person or company.

No measuring allowed on this document.



REV.	DESCRIPTION	DATE	APP.
A	DRAWING CREATED; ART.NO AND DRAWING NO. CHANGED FROM 860000-1 TO 1138484	2019-10-18	FJ



ITEM	QTY	ART NO	DWG NO	DESCRIPTION	MATERIAL	SIZE/DIM	TYPE	KG/PCS
16	2	5070.10		NYLON TORQUE NUT HIGH	8 FZB	M10	DIN 982	
15	6	5120.10.014		HEX SCREW	8.8FZB	M10X14	ISO4017	
14	2	5120.10.025		HEX SCREW	8.8FZB	M10X25	ISO4017	
13	10	5000.10		PLAIN WASHER	HV200 FZB	10,5X22X2	ISO7089	
12	1	1136762	1136762	HYDR. ASSY				
11	4	5070.08		NYLON TORQUE NUT HIGH	8 FZB	M8	DIN 982	
10	4	5000.08		PLAIN WASHER	HV200 FZB	8,4X16X1,5	ISO7089	
9	4	5152.08.090		SOCKET CSK SCREW	10.9FZB	M8X90	ISO10642	
8	2	5130.04.010		HEX. SOCKET SCREW MC6S	8.8 FZB	M4X10	SCREW	
7	2	5000.04		PLAIN WASHER BRB 4	HV200 FZB	4.3X8X0.8	WASHER	
6	1	1115299	1115299	ADJUSTABLE ELBOW COUPLING				0.1
5	1	404010	1107594	HYDRAULIC HOSE L=900				0.1
4	1	1132693	1132693	KIT,LIMIT SWITCH				
3	3	1132206	1132206	ADJUSTABLE,STOP				
2	1	1118354	1118354	PLATFORM ASSEMBLY				24.6
1	1	1132695	1132695	SCISSOR ASSY				

ITEM	QTY	ART NO	DWG NO	DESCRIPTION	MATERIAL	SIZE/DIM	TYPE	KG/PCS		
				ISO Method E			Date	2019-10-18	Total Weight (kg)	145.4
				Indicates Ra in µm			Designer	FJ	Approved by	
				Unless otherwise specified tolerances according to ISO 2768-mK (medium)			Scale	1:10	Sheet	
							Control Specification No.		Art. No.	
							Drawing No.	1138484	Revision	
							Drawing Type	Approved		

LIFT TABLE

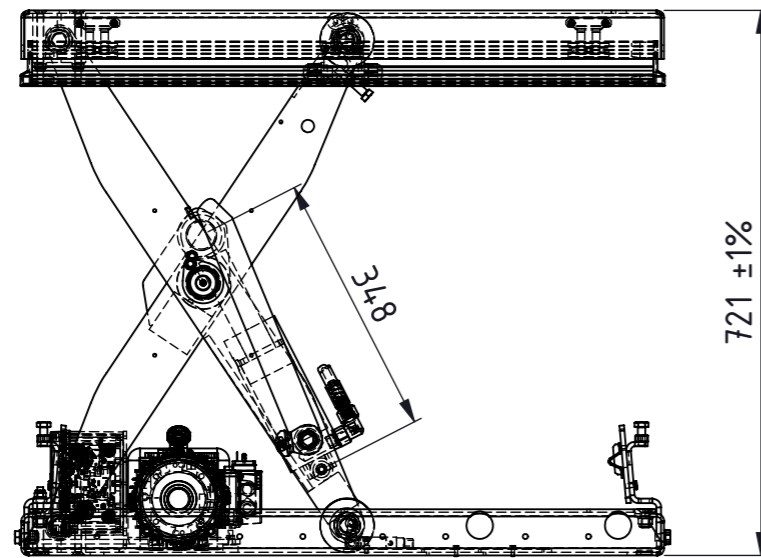
M0-005050-D1
850x650

Approved

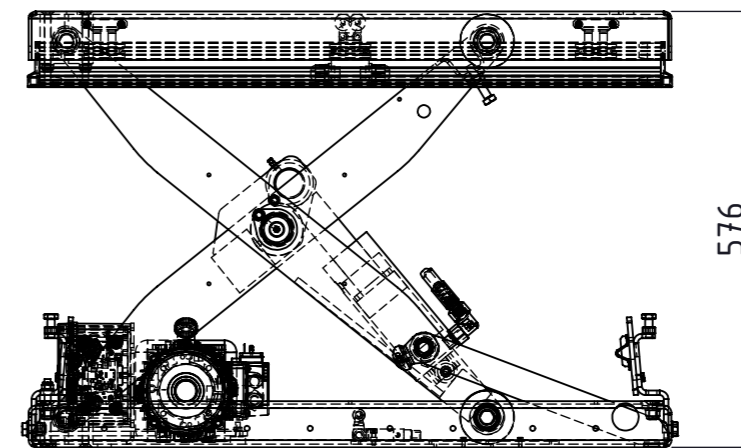
1138484

A

No measuring allowed on this document.



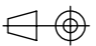

MECHANICAL TOP POSITION



SERVICE POSITION

This document is our property and must not be copied, used for manufacturing or communicated to any other person or company.

SPECIFICATION:
 LIFTING CAPACITY: 500 KG (UNIFORMLY DISTRIBUTED LOAD)
 MAX OIL PRESSURE LOWER POSITION: 119 BAR (+-15%)
 MAX OIL PRESSURE UPPER POSITION: 105 BAR (+-15%)
 LIFTING TIME: 9S (+-15%)
 LOWERING TIME: 9S (+25%, -15%)

 ISO Method E  Indicates Ra in µm Unless otherwise specified tolerances according to ISO 2768-mK (medium)	LIFT TABLE M0-005050-D1 850x650		Date	2019-10-18	Total Weight (kg)
			Designer	FJ	Approved by
		Scale	1:10	Sheet	2 / 2
		Control Specification No.		Art. No.	1138484
Drawing Type		Status	Approved		Drawing No.
			1138484	Revision	A